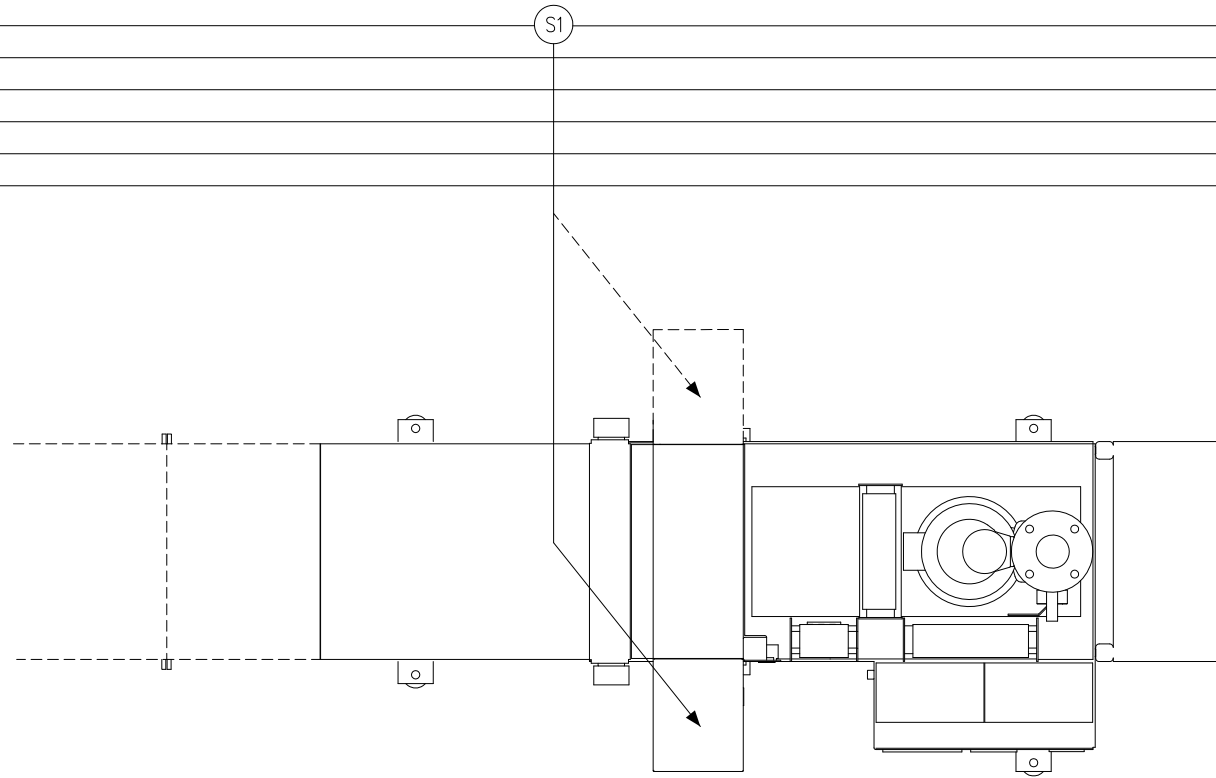


3 a	_____	S1	_____	3 a
1 a	_____		_____	1 a
3000 h	_____		_____	3000 h
200 h	_____		_____	200 h
50 h	_____		_____	50 h
n A	_____		_____	n A

a Interval in years
h Interval in operating hours
nA Interval following indication



Lubrication	
Machine section	* Conveyor belt Drive
Lubrication point no.	S1
Graphics character	
Instruction	
Check	
Check and top up if necessary	
Relubricate	
Replace	3 a
DIN 51502 lubricant	CLP PG 220
ISO 6743 lubricant	
Container capacity (liters)	0,42

Use lubricant to purity class ISO 4406-18/16/13!

* Fitted either on right or left hand side